

YEAR 2018

COVERAGE (B) STATION 6219

ROAD NETWORK MAJOR

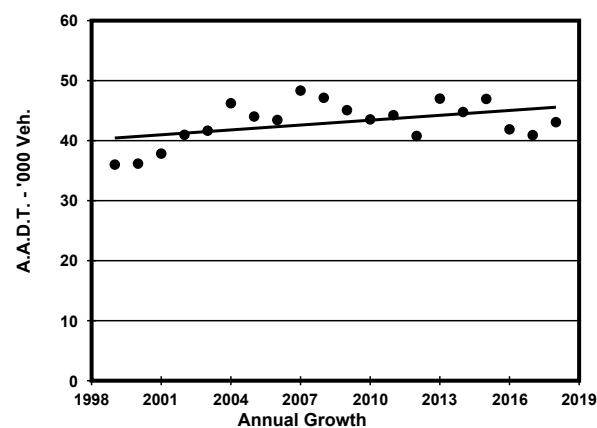
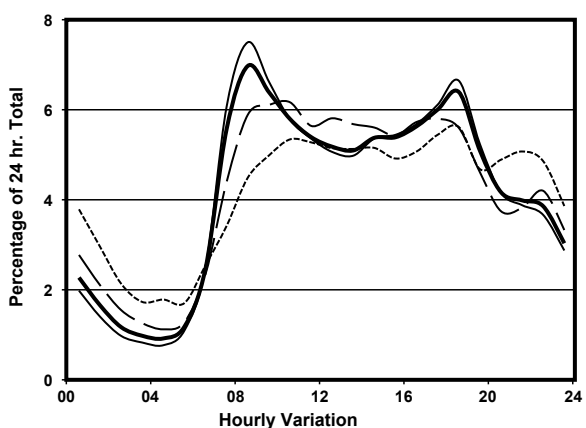
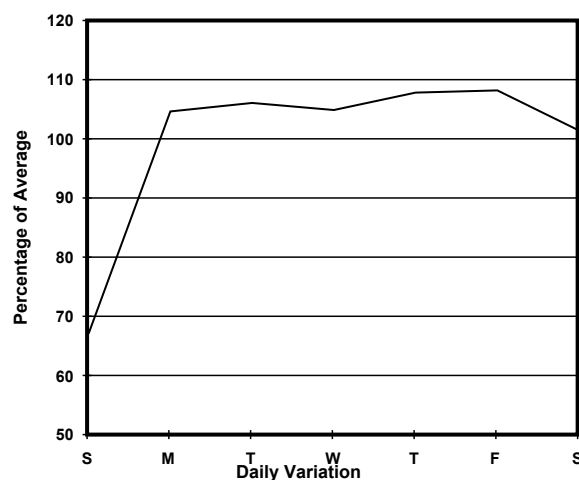
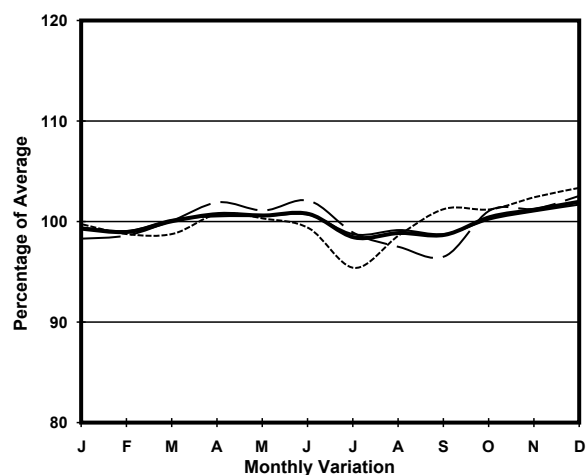
ROAD TYPE DISTRICT DISTRIBUTOR

LINK KWAI TSING RD & TSING YI S BRIDGE (from TSING YI RD to KWAI TAI RD INT)

8.8m  
E bound 2 lanes

10m  
W bound 3 lanes

## 1. TRAFFIC FLOW VARIATION AND GROWTH



— All day    - - - - Mon.- Fri.    ..... Sat.    - . - . - Sun.

## 2. TRAFFIC CHARACTERISTICS (BY DIRECTION)

Parameter	All - Day	Mon. - Fri.	Sat.	Sun.
<b>EAST BOUND</b>				
A.A.D.T.	25570	27640	26630	17400
R 12 / 24 - %	70.6	71.8	69.7	62.5
R 16 / 24 - %	86.5	87.7	84.8	80.2
AM Peak Hour	0800-0900	0800-0900	0900-1000	0900-1000
One-way flow at AM peak hour	1800	2070	1740	1000
T - % (AM)	-	21	-	-
PM Peak Hour	1800-1900	1800-1900	1700-1800	1800-1900
One-way flow at PM peak hour	1550	1720	1560	960
T - % (PM)	-	21.5	-	-
Prop.of commercial vehicles - 16 hr.	-	25.3	-	-
<b>WEST BOUND</b>				
A.A.D.T.	17510	18990	17850	12010
R 12 / 24 - %	67.2	68.9	65.1	56.4
R 16 / 24 - %	86	87.4	83.3	78.5
AM Peak Hour	0800-0900	0800-0900	0800-0900	0800-0900
One-way flow at AM peak hour	1200	1430	990	470
T - % (AM)	-	20.9	-	-
PM Peak Hour	1800-1900	1800-1900	1600-1700	1700-1800
One-way flow at PM peak hour	1210	1370	1060	720
T - % (PM)	-	22.4	-	-
Prop.of commercial vehicles - 16 hr.	-	27.9	-	-

## 3. OTHER INFORMATION AND COMMENT

**4. Vehicle classification and occupancy - Monday to Friday**

Time		Class of vehicle									
		Motor Cycle	Private Car	Taxi	Private LB	PLB	Goods veh.		Non Fr. Bus	Fr. Bus	
							Light	M & H		SD	DD
0700-0800	Pro	3.5	17.9	21.8	2.0	5.8	18.6	19.1	7.6	0.1	3.5
	Ocp	1.1	1.3	2.0	4.9	14.4	1.4	1.1	8.3	13.3	58.6
0800-0900 Peak hour	Pro	3.9	26.9	24.0	1.4	3.9	18.8	15.1	3.3	0.1	2.6
	Ocp	1.1	1.3	2.1	5.1	16.3	1.3	1.1	11.0	31.3	58.7
0900-1000	Pro	1.6	23.4	20.8	1.6	4.4	24.3	20.3	1.2	0.1	2.4
	Ocp	1.1	1.2	2.1	1.6	14.9	1.4	1.1	4.4	14.0	37.0
1000-1100	Pro	1.1	17.6	18.8	0.6	3.8	28.2	26.2	1.4	0.1	2.2
	Ocp	1.0	1.4	2.2	1.8	12.9	1.4	1.2	2.8	1.0	26.0
1100-1200	Pro	1.7	17.2	13.2	2.4	3.3	29.4	29.8	0.7	0.0	2.4
	Ocp	1.0	1.4	2.0	2.3	11.6	1.3	1.1	5.0	0.0	27.7
1200-1300	Pro	1.7	20.5	11.9	2.2	4.0	24.4	30.1	2.6	0.0	2.7
	Ocp	1.1	1.6	1.9	3.2	10.6	1.2	1.1	7.0	0.0	22.8
1300-1400	Pro	1.0	21.2	11.6	1.2	4.2	28.5	28.3	1.6	0.0	2.5
	Ocp	1.0	1.3	2.0	1.1	12.7	1.3	1.2	5.5	0.0	27.4
1400-1500	Pro	1.9	20.2	13.5	0.5	4.3	25.9	28.8	2.1	0.0	2.8
	Ocp	1.0	1.4	2.0	2.0	13.7	1.4	1.2	1.3	0.0	26.8
1500-1600	Pro	1.7	17.6	13.4	2.2	3.6	32.5	23.4	2.5	0.1	3.1
	Ocp	1.1	1.5	2.0	2.7	15.2	1.4	1.2	7.4	14.0	27.6
1600-1700	Pro	2.1	22.6	14.4	1.8	4.3	24.7	24.2	2.9	0.1	2.8
	Ocp	1.0	1.3	2.0	3.0	14.0	1.4	1.2	7.2	12.0	39.1
1700-1800	Pro	4.6	22.9	14.7	1.8	4.7	24.1	21.5	2.7	0.1	3.0
	Ocp	1.1	1.5	1.8	3.8	14.7	1.3	1.2	9.1	28.7	48.5
1800-1900	Pro	5.6	33.2	17.1	0.1	4.5	17.5	15.1	3.3	0.1	3.3
	Ocp	1.0	1.4	1.9	1.0	16.6	1.3	1.1	11.4	23.3	53.4
1900-2000	Pro	4.0	40.4	19.8	0.3	5.6	10.6	11.3	4.7	0.1	3.2
	Ocp	1.1	1.2	2.2	5.5	14.0	1.3	1.2	16.7	19.0	47.6
2000-2100	Pro	3.0	32.0	27.4	0.4	7.0	10.5	12.4	3.4	0.1	3.9
	Ocp	1.0	1.5	1.9	9.0	11.4	1.3	1.0	13.7	6.0	33.0
2100-2200	Pro	4.8	34.5	28.7	0.5	8.9	6.5	9.8	1.7	0.2	4.6
	Ocp	1.2	1.4	2.0	2.5	12.2	1.4	1.1	9.0	7.7	31.5
2200-2300	Pro	1.7	35.0	32.4	0.2	6.7	8.6	8.6	1.7	0.2	4.9
	Ocp	1.0	1.4	1.6	2.0	12.0	1.2	1.1	6.4	9.3	31.9
16 hours	Pro	2.8	24.6	18.5	1.3	4.7	21.6	20.7	2.8	0.1	3.0
	Ocp	1.1	1.4	2.0	3.2	13.7	1.4	1.1	9.1	16.5	39.1

**Legend**

**Pro.** Proportion of vehicles in % (Sum may not add up to 100% due to figure rounding)\*

**Ocp.** Average occupancy of vehicles including both driver and passengers\*

**M&H** Medium and Heavy

**\*** All traffic data are collected from combined bounds except for one way traffic